

mini guide

Rhyl & Prestatyn



Wales
Cymru

welcome

Welcome to the great British seaside. Rhyl and Prestatyn on the North Wales coast are among our best-loved resorts. And no wonder. We've got everything you could possibly want from a seaside break.

Sand, for a start. Seven unbroken miles of it. Clean, safe and festooned with Seaside Awards and Blue Flags. And patrolled in summer by a team of beach lifeguards.

We've also got the sea. Plus the watersports enthusiasts to go with it. There's a kitesurfing school at nearby Kinmel Bay or you can launch your jet ski from Barkby Beach at Prestatyn.

And we've got the sun. Honest. Forget what you may have heard about the Welsh weather because Rhyl and Prestatyn are officially sunnier than the national average. And just in case, we've got plenty of indoor attractions to keep you entertained.

So – two towns with plenty of sand, sea and sun. Which to choose? Well either, if you want to work on your tan, go paddling or buy a stick of candyfloss.

If you've something more specific in mind – coming face to face with a shark, for example, or walking through an Area of Outstanding Natural Beauty – then read on. This booklet should help you plan your stay.

And if you want to know more, just have a word with the friendly staff in our Tourist Information Centre (TIC). Call in at The Village, West Parade, Rhyl LL18 1HZ, ring 01745 355068 / 344515 or email rhyl.tic@denbighshire.gov.uk





what's inside

Rhyl

A bird's eye view	4
The great outdoors	6
Indoor activities	8
Entertainment	10

Prestatyn

Out in the fresh air	12
Under cover	14
Entertainment	16
Heritage	18

Out of town	20
-------------	----

Directory	22
-----------	----

Street maps	24
-------------	----



Published by Denbighshire County Council Tourism Unit. If you have any queries or suggestions regarding this booklet please email dcc_tourism@denbighshire.gov.uk or tel: 01824 708236. The publishers can accept no liability whatsoever for any errors, inaccuracies or omissions in any way connected with or arising out of this publication.

a bird's eye view



Got a head for heights? You'll need it. The Sky Tower is more than 70 metres high - or 240 feet in old money. That's about the height of 16 double-decker buses.

One moment you're still on ground level. Then the perspex-sided observation car starts to rise - and shoots up to its final vantage point in a matter of seconds.

We'd call it a bird's eye view except that you can

look down on the seagulls from up here. Along with Rhyll's spectacular beach and the cluster of attractions along the east and west promenades.

You can see right across the bay to the mountains of Snowdonia. And on a clear day you can even pick out Blackpool Tower.

Sky Tower, West Parade, Rhyll. 01745 344433.
www.rhylsuncentre.co.uk

A stroll along the prom is always a pleasure. But Rhyl's award-winning Drift Park takes it to a completely new level.

Designed to make the most of the stupendous views across the beach and guarded by 14-metre tall beacons of slate, timber and copper, the Drift Park has five separate zones.

First is the water play area with its huge paddling

pool and gushing water jets. Then there's an open-air theatre. A mini golf course. A children's play garden with rides and climbing frames. And a natural garden planted with shrubby pines and wildflowers that thrive in the salty sea air.

Chances are you'll be in there for hours. And it's completely free.

Drift Park, West Promenade, Rhyl.



the great outdoors

Serious boat anglers and novices alike can charter a trip out of Rhyl harbour. Expect mackerel, plaice, gurnard, bass, pollack and cod. And a very warm welcome in the kitchen on your return.

The crafty 30-pound carp at Brickfields Pond are purely for sport. If you can catch them, that is. The rest of the family can follow the nature trail, go pond dipping or do a little bird watching at this popular local nature reserve. They might even see an otter.

Brickfields Pond, Ffordd Derwyn,
Rhyl LL18 4LE.



Rhyl Miniature Railway, the oldest mini steam line in Britain, celebrates its 100th birthday in 2011. It's been taking families on trips around the Marine Lake since 1911.

These days the lake, joined to the sea by a single sluice gate and big enough to have its own island in the middle, is home to wind surfers, canoeists and water skiers. Get the driver to give them a toot as you steam past.

Rhyl Miniature Railway. 01352 759109.
www.rhylminiaturerailway.co.uk

Marine Lake, Wellington Road, Rhyl
LL18 1AQ. 01824 708411.

Rhyl's Botanical Gardens are not just about flowers, although we've got more than our fair share of those. There are also tennis courts, bowling greens, a nine-hole putting green and a café – all run by a dedicated team of volunteers from a local residents' association.

Rhyl Botanical Gardens, Grange Road
LL18 4DA. 07789 942937.



Rhyl Golf Club, established in 1890, is the oldest and one of the friendliest in North Wales. It can also be one of the toughest.

The links course might only have nine holes but there are 18 tees and the Irish Sea is just yards away. If a stiff northerly or westerly is blowing, that par score of 71 may seem like a distant dream.

Rhyl Golf Club, Coast Road, Rhyl LL18 3RE.
01745 353171.
rhylgolfclub@btconnect.com,
www.rhylgolfclub.co.uk



indoor activities



The Sun Centre delivers guaranteed surf and 30-degree temperatures, no matter what the weather is doing outside. This famous indoor tropical water park creates its own climate with spell-binding thunder, lightning and rain in the lagoon pool. And the waves in the surf pool – the first in Europe – are all man-made.

A rooftop monorail gives you an unbeatable view of the whole spectacle. Including your kids screaming 90 metres down the rapid water chute known, for obvious reasons, as The Buzz.

Sun Centre, Promenade, Rhyl LL18 3AQ. 01745 344433. www.rhylsuncentre.co.uk



As if the chance to come face to face with sharks in Wales's only walk-through underwater tunnel wasn't enough.

SeaQuarium's "wet and wild" Sealion Cove is a specially designed marine theatre where these natural-born performers show off with front flipper walks, balancing acts, hurdle jumps – and lots of splashing in their 33,000-gallon pool.

Elsewhere you can see tropical terrapins, huge spider crabs, elusive moray eels and deadly lionfish. You can go "aahh" over the babies in the shark and seahorse nurseries. And you can win a toy in the Sharky Shack Fun Zone.

SeaQuarium, East Parade, Rhyl LL18 3AF.
01745 344660. rhyl@seaquarium.co.uk,
www.seaquarium.co.uk

Let's face it, kids like to be scared witless. Which is where the Terror Tombs come in. Part of the Palace Fun Centre, they promise unsuspecting youngsters "the fright of your life".

And we wouldn't recommend Geronimo's Revenge in the adventure playground to those of a nervous disposition either. At 25 feet, it's the largest and fastest vertical drop slide in the region. You may find it more relaxing in the casino or playing bingo. Although thinking about the big cash prizes, maybe not.

Palace Fun Centre, Promenade,
Rhyl LL18 1HG. 01745 344446.
www.palacefuncentre.co.uk



entertainment

You can catch West End musicals, top comedians and pop stars at the 1,000-seat Pavilion Theatre on the promenade. And the latest blockbuster movies at the Apollo Cinema, due to reopen in the summer of 2011 after a major refurbishment. Expect lots of screens, air-conditioned auditoria and digital surround sound. Not to mention toffee popcorn.

Pavilion Theatre, Promenade, Rhyl LL18 3AQ. 01745 330000.
rhyl.pavilion@denbighshire.gov.uk,
www.rhylpavilion.co.uk

Apollo Cinema, Children's Village,
West Parade, Rhyl LL18 1HB.
0871 220600.
www.apollocinemas.com



You can't come to the seaside and not have fish and chips at least once. But for something a little more adventurous, try a plate of live oysters on the seafront – a dash of Tabasco and down the hatch. Our food ranges from honest-to-goodness pub grub to Indian, Chinese, Italian and, of course, Welsh. Pick up a list from the TIC.

Tourist Information Centre, The Village, West Parade, Rhyl LL18 1HZ. 01745 355068 / 344515. rhyl.tic@denbighshire.gov.uk





Looking for a present? Rhylcreate, a gallery for local artists and craft makers, could be the answer. Browse paintings, glass, jewellery, cards, woodwork, textiles and ceramics - or even commission your own artwork.

Rhylcreate Gallery 36, 36 Kinmel Street,
Rhyl LL18 1AN. 01745 355466.
www.rhylcreate.info

Rhyl's shopping centre is flat, pedestrianised and wheelchair-friendly with all the big High Street brand names you'd expect - and two retail parks nearby. We also have a quirky range of local specialists, regular market days and a popular car boot sale every week during summer. The TIC will tell you more.

Tourist Information Centre, The Village, West Parade, Rhyl LL18 1HZ. 01745 355068 / 344515. rhyl.tic@denbighshire.gov.uk



At Rhyl Museum you can stroll down an imaginary Edwardian pier, peek into kiosks and discover more about the personalities who shaped Rhyl and Prestatyn – from Roman bathers to early cinema pioneers.

Rhyl Museum, Library Building, Church Street,
Rhyl LL18 3AA. 01745 353814.
heritage@denbighshire.gov.uk

out in the fresh air



Prestatyn is walking country. We're at the very beginning (or the end, depending on how you look at it) of Offa's Dyke National Trail. It runs 177 miles through some of the loveliest countryside in Wales. Including the Clwydian Range Area of Outstanding Natural Beauty that starts in the limestone hillsides above Prestatyn and among the paths winding through Bishop's Wood.

If that's too much of a hike, try the flat, family-friendly Prestatyn-Dyserth Walkway along the route of an old railway line. Or the summer ghost walks around Prestatyn. Wherever you go you'll find that "Walkers are Welcome". And that's official.

www.nationaltrail.co.uk/offasdyke
www.clwydianrangeaonb.org.uk
www.walkersarewelcome.org.uk



They call Gronant Dunes a Site of Special Scientific Interest. You might find it quite intriguing, too. Especially if you catch a glimpse of the rare wild orchids, sand lizards or natterjack toads. Not to mention the only breeding colony of little terns in Wales. And when you've finished, you can walk all the way from Gronant to Llandudno as part of the new Wales Coast Path.

Denbighshire Countryside Service. 01352 810614. countryside@denbighshire.gov.uk, www.denbighshire.gov.uk/countryside



A word of advice. Practise your low punched shots before tackling the championship links at Prestatyn Golf Club. Those sea breezes can play havoc with your handicap. Nine-hole St Melyd in nearby Meliden can be a stiff test, too, but superb views over the bay compensate for any dropped shots. And if all else fails, there's always pitch and putt.

Prestatyn Golf Club, Marine Road East, Prestatyn LL19 7HS. 01745 854320. www.prestatyn golf club.co.uk

St Melyd Golf Club, Meliden Road, Prestatyn LL19 8NB. 01745 854405. www.stmelyd golf.co.uk

under cover



The clue's in the name. Ffrith Beach Fun Parc is right by the beach. And it's devoted to fun. The state-of-the-art Astro Bowl tenpin bowling alley should get you going nicely. There's are children's rides and a skating rink. A BBQ grill, bar and diner. And a Reptile Corner where your kids can

touch snakes, iguanas and frogs. They well may do a bit of screaming, too.

Ffrith Beach Fun Parc, Victoria Road West,
Prestatyn LL19 7AR. 01745 850079.
info@ffrithbeachfestivalgardens.co.uk,
www.ffrithbeachfestivalgardens.co.uk



They've thought of everything at the Nova Centre. You can take a dip in Neptune's Pool. Work out at Bodyz gym with a sauna to follow. And when you've really worked up an appetite, pop into the Windmill restaurant – where they do a mean Sunday carvery.

Come back in the evening and you'll be in very good company. On one magical night in 1962, when the Starlight Suite function room was known as the Royal Lido Ballroom, the Beatles played here. There's a plaque outside to prove it.

Nova Centre, Central Beach, Prestatyn LL19 7EY. 01745 888021.
www.prestatynnova.co.uk

North Wales Bowls Centre has an eight-rink indoor green to international standards. But don't worry, you don't have to be that good yourself. It's open to novices and experts alike. And there's a pro shop where you can buy the latest gear and pick up a bit of free advice.

You can even just come and watch. Lots of people meet here for a catch-up over a coffee, a drink in the bar or a home-made meal in the restaurant.

North Wales Bowls Centre, Ffrith Beach, Prestatyn LL19 7AR. 01745 886100.
www.clwydleisure.co.uk/bowls



entertainment



The Scala cinema in Prestatyn High Street has always been a movie pioneer. It was opened by flamboyant JR Saronie way back in 1913, making it the oldest one-screen cinema in North Wales.

Now it's Wales's first fully digital cinema with two 150-seat theatres showing the latest films in 3D and high definition. It also hosts drama, comedy and dance. It has a gallery, Oriol Scala,

where you can see local landscapes, wood carvings, ceramics and hand-crafted jewellery.

And there's a bistro café-bar called Saronie's in tribute to the man who made it all possible.

Scala, 47 High Street, Prestatyn LL19 9AH.
0871 902 57511 / 01745 850197.
www.scalaprestatyn.co.uk

Some days only a really good mooch will do. Fortunately Prestatyn has plenty of big-brand shops and there are lots of quirky specialist and independent retailers clustered around the High Street.

Prestatyn outdoor market near the railway station is a great place to hunt down a bargain.

There are up to 150 stalls selling everything you could imagine every Tuesday, Friday and Sunday. The TIC will tell you more.

Tourist Information Centre, The Village, West Parade, Rhyl LL18 1HZ. 01745 355068 / 344515. rhyl.tic@denbighshire.gov.uk

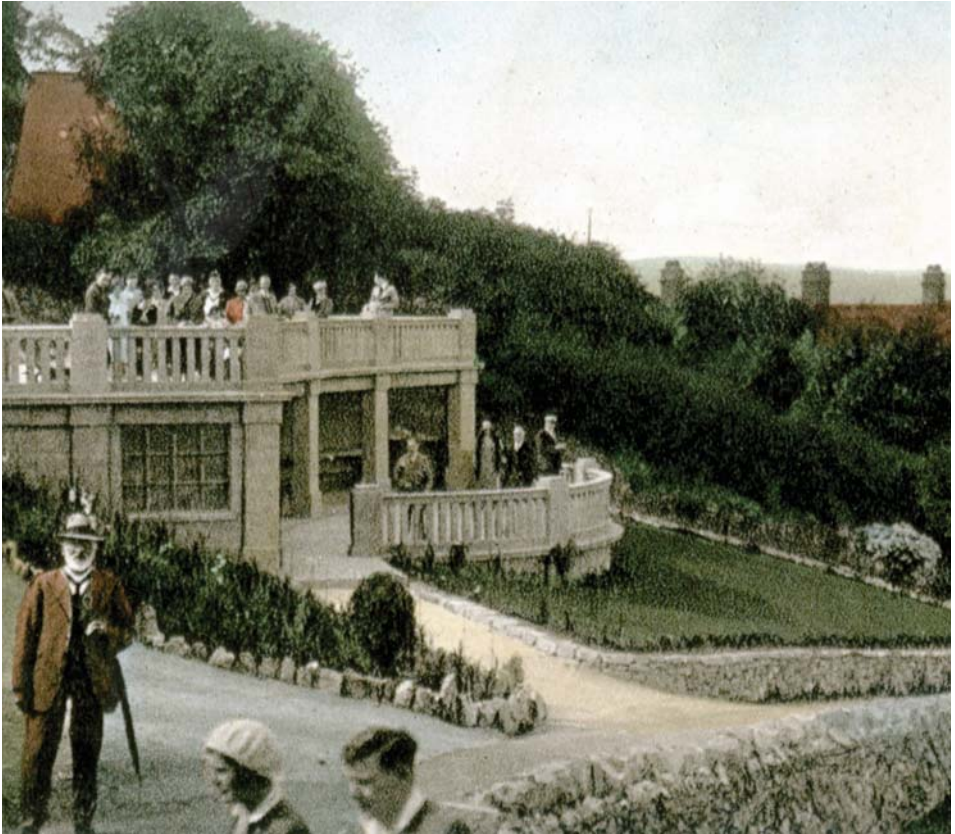


Eat out in Prestatyn and the chances are that the food on your plate won't have travelled as far as you have. That's because more and more of our pubs and restaurants are committed to using local produce. Like Welsh Black beef, freshly caught fish or spring lamb. So don't cut your calories – cut your food miles instead. The TIC can tell you where.

Tourist Information Centre,
The Village, West Parade,
Rhyl LL18 1HZ. 01745 355068 /
344515. rhyl.tic@denbighshire.gov.uk



heritage



Prestatyn was really put on the map in 1848 with the opening of the Holyhead and Chester railway line. It quickly became one of Victorian and Edwardian Britain's most elegant and fashionable seaside resorts.

In 1920 local dignitary ET Williams wrote this

poem: "If you are ill, don't take a pill. I'll tell you something better still. For sunshine and air, weather's that fair and health-giving rest, Prestatyn is best."

Let's be honest, it's not going to win any prizes. But the sentiments still hold good today.



Our original visitors were Roman soldiers from the Twentieth Legion. And what did the Romans ever do for us? Well, they built a bath house which, thanks to careful excavation, can still be seen on Melyd Avenue.

Bathers would start in a cold changing room with a plunge bath. Then they'd spend a bit of time in a warm room before passing into an intensely hot area where they sweated profusely, oiled their bodies and scraped them clean with a curved tool called a "strigil". All because no one had invented soap.

We're so proud of this heritage that we installed a sculpture of a giant metal Roman helmet in Hillside Gardens overlooking the town. It's become an iconic image for walkers finishing Offa's Dyke National Trail.

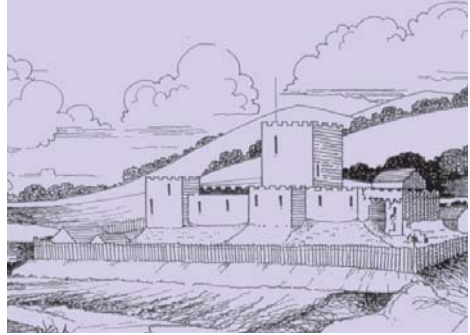
Roman Bath House, Melyd Avenue,
Prestatyn LL19 8RN.
Hillside Gardens LL19 9PW

Henry II built Prestatyn Castle in 1157. But then he got distracted by his spat with Thomas Becket, Archbishop of Canterbury, and rather took his eye off the ball in Wales.

The result was a bloody uprising by Owain Gwynedd who, just 10 years later, razed the castle to the ground amid much bloodshed. You can still see the remains of the motte, bailey and ditch. But they're not easy to find.

Stand on the railway bridge near the station on the A548 Prestatyn Road, with your back to the sea, and look left into the field. Then head for the stone pillar on top of a raised mound.

Prestatyn Castle: grid reference SJ 072-833.



out of town



As you might have realised by now, there's plenty going on in Rhyl and Prestatyn. But if you do fancy a day away from the beach, rural Denbighshire has plenty to offer.

You don't have to take the car. From July to September the Clwydian Ranger bus service offers a greener alternative, linking Rhyl and Prestatyn with attractions in the Clwydian

Range Area of Outstanding Natural Beauty.

Pick up a leaflet from the TIC. Or just get on your bike. Several local cycle tracks start in Prestatyn. And one very big one – the North Wales Coast Cycle Route – passes right through both Rhyl and Prestatyn promenades on its epic journey from Chester to Holyhead.

St Asaph Cathedral is the smallest ancient cathedral in Britain – just 182 feet long and 68 feet wide. There's a monument to the translators of the first Welsh Bible on the cathedral green. And every September the world's finest classical musicians perform here during the North Wales International Music Festival.

www.stasaph.co.uk



King Edward I was a man of big ideas. He built muscle-bound Rhuddlan Castle in 1277. Then he diverted the River Clwyd for two miles so it could be supplied by ship. More than 800 years later, people still travel from all over the world to see the castle that was worth moving a river for.

Rhuddlan Castle LL18 5AD. 01745 590777.

www.cadw.wales.gov.uk

For a small village, Bodelwyddan has two very big attractions. One is the famous “marble church” erected by Lady Willoughby de Broke in 1856. The other is Bodelwyddan Castle, Welsh outpost of the National Portrait Gallery.

Bodelwyddan Castle, Bodelwyddan, Denbighshire LL18 5UY. 01745 585088.

enquiries@bodelwyddan-castle.co.uk,
www.bodelwyddan-castle.co.uk



Bodrhyddan Hall near Rhuddlan, a 17th century country house with Victorian additions, is home to Lord Langford and his family. Not to mention a 3,000-year-old mummy. The gardens include a formal parterre and a recently restored “pleasance” with summerhouse and ponds.

Bodrhyddan Hall, Dyserth Road, Rhuddlan LL18 5SB.

01745 590414.

directory

What else do you want to know? Here's a list of vital facts – from where to find the nearest bank to the frequencies of the local radio stations. And if you still can't find what you need, speak to our friendly Tourist Information Centre (TIC). What they don't know isn't worth knowing.

Rhyl Tourist Information Centre,
The Village, West Parade, Rhyl LL18 1HZ.
01745 355068 / 344515.
rhyl.tic@denbighshire.gov.uk,
www.rhyl-prestatyn.co.uk

Banks and building societies

Rhyl

Santander, 52 High Street.
Barclays, 68/70 High Street.
Halifax, 15/17 Russell Road.
HSBC, 23 Wellington Road.
Lloyds TSB, 10/14 Queen Street.
Nationwide, 22 Wellington Road.
Yorkshire, 26 High Street.

Prestatyn

HSBC, 35 High Street.
Natwest, 57 High Street.
Abbey, 52 High Street.
Royal Bank of Scotland, 70 High Street.
Barclays, 128 High Street.
Lloyds TSB Bank, 155 High Street.

Caravan and camping sites

List available from the TIC and also featured in "Rhyl & Prestatyn Funtime" brochure.

Conferences and exhibitions

Rhyl

The Pavilion Theatre 01745 332414 seats more than 1,000 delegates in the main auditorium. The Town Hall 01745 337480 has excellent facilities for 40-300 delegates.

Prestatyn

The ballroom at Nova Centre's Starlight Suite 01745 888021 seats more than 200 people.

Churches and religious establishments

List available from the TIC.

Dancing

Ask the TIC for venues in Rhyl that offer ballroom, modern, sequence and line dancing. Prestatyn's Nova Centre provides tea, line and salsa dancing – plus a Solid Gold disco night.

Dining out

Pick up a full list of restaurants, pubs and other local eateries from the TIC.

Emergency

Accident & Emergency: Glan Clwyd Hospital, Sarn Lane, Bodelwyddan LL18 5UJ. 01745 583910.
Clarence Medical Centre, Rhyl LL18 1DA.
01745 350980.
Out of Hours: Morfa Doc 01745 854496.

Libraries

Church Street, Rhyl LL18 3AA. 01745 353814.
Nant Hall Road, Prestatyn LL19 9LH. 01745 854841.

Parking

Rhyl

Many Pay and Display car parks with a total of 2,500 spaces and easy access to the beach and prom.
Disabled spaces at all car parks.

Prestatyn

Pay and Display at Ffrith Beach, Barkby Beach, Nova East, Nova West, Nova Centre, Kings Avenue, bottom of High Street. Free car parks at Station Road and behind the parish church in High Street.

Post offices

Rhyl

Main post office at corner of Water Street and Wellington Road LL18 1AA. 0845 722 3344.
Sub-post offices at Highfield Park, 20 Churton Road LL18 3ND and St Margarets Drive LL18 2HT.

Prestatyn

26 High Street LL19 9BB. 01745 853304.
Ffrith Beach, Victoria Road West LL19 7AR.
01745 887247.

Radio stations

For local information on weather, traffic and events, tune in to Point FM Community Radio 103.1 FM or Heart FM 96.3 FM.

Sport

Bowling

Rhyl

National Crown Green Bowling Centre, East Parade LL18 3AQ. 01745 330651.

Botanical Gardens, Grange Road LL18 4DA. 07789 942937.

Indoor tenpin bowling at Mr B's, 29-33 West Parade LL18 1HF. 01745 350835

Prestatyn

North Wales Bowls Centre (indoor), Ffrith Beach LL19 7AR. 01745 886100.

Outdoor bowls at Highbury Bowling Club, Highbury Avenue 01745 856787 and Bryn Newydd Bowling Club, Bryn Newydd 01745 887596.

Football

Rhyl Football Club, Grange Road. 01745 338327, malcolmjackson@rhylfc.co.uk

Prestatyn Town Football Club, Bastion Road. 01745 856905

Racing

Tir Prince Raceway, harness racing within a five-minute drive of Rhyl. 01745 345123.

Auto grass and banger racing at the Coastal Raceway, Pydew Farm on Old Rhyl Road, Prestatyn. 07845 154643. info@coastalraceway.co.uk

Tennis

Rhyl

Courts at Leisure Centre and at Botanical Gardens, Grange Road LL18 4DA. 07789 942937.

Prestatyn

Courts at Gronant Road and at Leisure Centre.

Sports Centres

Rhyl

Sun Centre 01745 344433.

Rhyl Leisure Centre, Grange Road LL18 4BY. 01745 352900. 25 metre swimming pool, fitness suite, five-court sports hall, all-weather pitch, gymnasium.

Prestatyn

Nova Centre, Central Beach, Prestatyn LL19 7EY

Tel: 01745 888021, www.prestatynnova.co.uk

Prestatyn Leisure Centre, Princes Avenue, Prestatyn

LL19 8RS. 01745 855632. Sports hall, gymnasium,

Club Pulse Fitness Suite, squash courts, climbing wall, outdoor netball/tennis courts, grass pitches.

Tide

Tide timetables on sale from the TIC.

Toilets

Rhyl

Events Arena, East Parade*; Town Hall, Queen Street*; Children's Village, West Parade (summer only); Railway Station, Bodfor Street; East Promenade Car Park, East Parade (summer only); East Promenade Bowling Greens, East Parade; Botanical Gardens, Grange Road*; Old Golf Road, Promenade*.

Prestatyn

Nova Centre; Prestatyn Bus Station*; rear of Council Offices at Nant Hall Road*.

All are suitable for people with disabilities. All those marked * are accessible with a RADAR key which can be purchased from the TIC. Proof of ID required.

Transport

Bus Services

Timetables available from the TIC. Bus stations at Station Square, Bodfor Street, Rhyl LL18 1AT and next to Prestatyn High Street with daily services.

Car Hire

List available from the TIC.

Coach Services

National Express has a regular service to Rhyl and Prestatyn from most areas in Britain. Voel Coaches provide day trips from Rhyl to various locations. Bookings available from the TIC.

Railway

Rhyl and Prestatyn are both on the North Wales Coast Line. Rhyl station is a five-minute walk from the town centre and next to the bus station. Prestatyn station is a very short walk from the town centre. National Rail Enquiry line 08457 484950.

Atyniadau i'w mwynhau / Attractions to visit

Y rhyll / rhyl



(H) ar agor Haf yn unig - (S) open summer only

- 1 Canolfan Croeso
Tourist Information Centre
- 2 Canolfan Hwyl
Y Palas
Palace Fun Centre
- 3 Sinema
Apollo
Cinema

- 4 Y Pentref
The Village
- 5 Neuadd
y Dref
Town Hall
- 6 Gorsaf Heddlu
Police Station
- 7 Gorsaf Fysiau/Rheliffordd
Railway & Bus Station
- 8 Y Theatr Fach
Little Theatre
- 9 Llyfrgell
Library
- 10 Y SeaQuarium
SeaQuarium
- 11 Arena
Digwyddiadau
Events Arena
- 12 Canolfan Fowlio
Gogledd Cymru
N Wales Crown Green
Bowls Centre
- 13 Heulfan
Sun Centre
- 14 Theatr
Y Pafiliwn
Pavilion
Theatre
- 15 Gerddi
Botanegol
Botanical
Gardens
- 16 Rheliffordd Fach (H)
Mini
Railway (S)
- 17 Lle Chwarae
i Blant
Children's
Play Area
- 18 Parc Sgriallu
Skateboard
Park
- 19 Pwll Padlo (H)
Paddling
Pool (S)
- 20 Twr Y Rhyll (H)
Skytower (S)
- 21 Amffitheatr
Amphitheatre
- 22 Golff Mini
Mini Golf